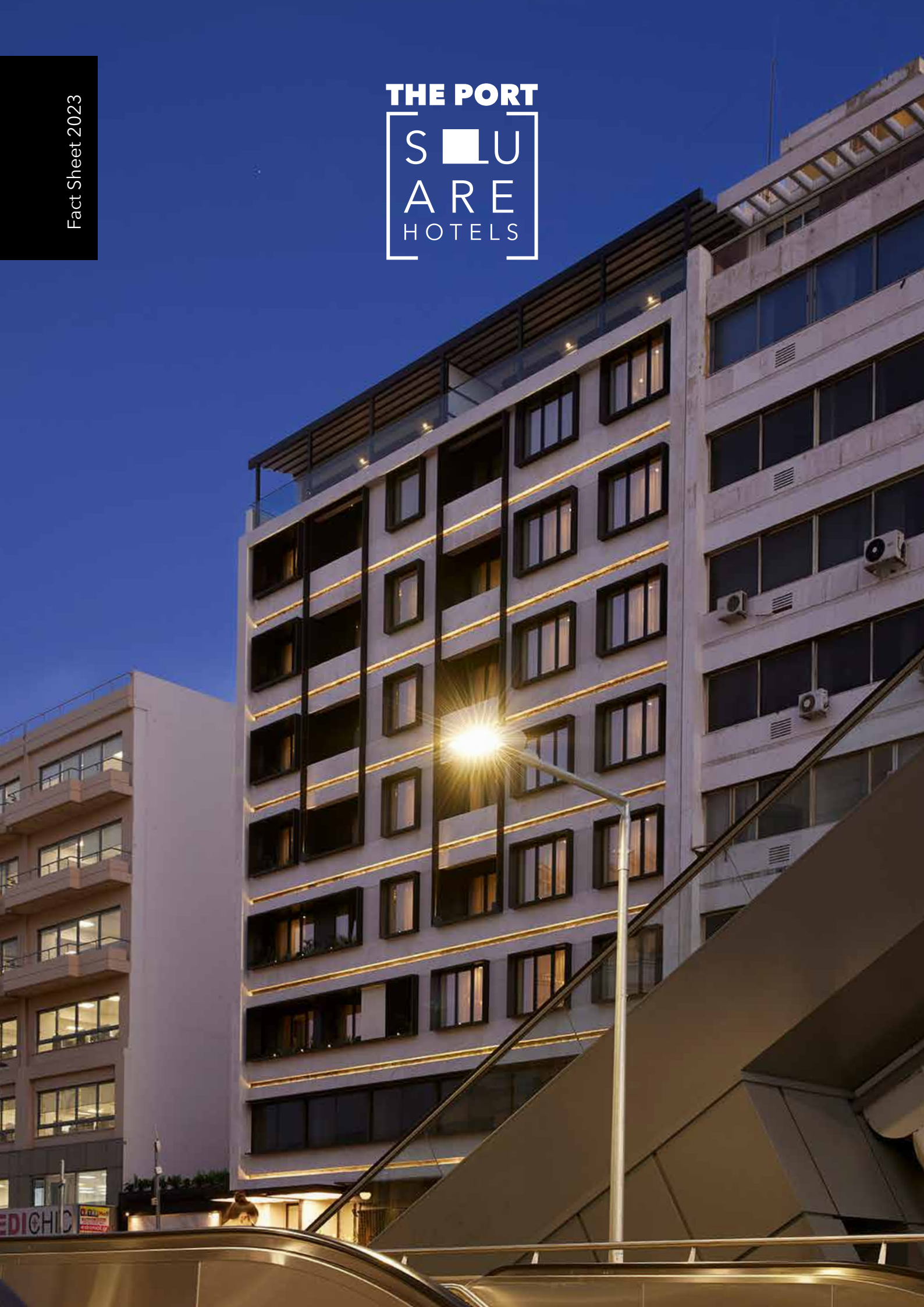


THE PORT





## **A BRAND NEW HOTEL AT THE HEART OF PIRAEUS RIGHT NEXT TO THE PORT**

“A DOOR TO THE PORT, A PASSAGE TO THE CITY”

Located just in front of the port, this new city hotel is the ideal destination for every business traveler, every island hopper and repeater. The Port Square Hotel has landed to fill the gap of a smart stay in the area. Square Hotels unveils this brand-new opening in the very heart of the Piraeus port to those longing to stay at a splendid state-of-the-art accommodation with the most direct proximity to the port. The Port Square Hotel with 53 rooms & suites has found its place at the forefront of the port at a strategic location, just a few steps away of the train station and the new metro station.

Guests find themselves at the passage that leads them directly to the city, connecting them easily to the center of Athens. Rising 8 floors from the street, most of the building's windows and balconies look out over the square and the historical building of the train station with side sea views. Minimal aesthetics and the latest technology in hotel services are mirrored to every corner of the hotel, from the rooms to the rooftop area. Opening its doors in June 2022, it brings the feeling of a luxury break at the port with a comfortable proximity to the city center.



**THE PORT DOUBLE ROOM  
WITH CITY VIEW**

---

Size: 19 sq.m

Bedding: Double size  
Bed/Twin beds

Sleeps: Up to 2 guests

**VIEW MORE >**

The Port Double Room with city view combines contemporary furnishing with sleek lines featuring a double bed or twin beds and a bathroom with walk-in shower. Ensuring a comfortable stay with high speed Wifi, a flat-screen 43" TV, a writing desk, a Nespresso coffee machine and a tea station, the hardest part will be deciding where to go and what to eat.

**THE PORT DOUBLE ROOM  
WITH SQUARE VIEW**

---

Size: 21 sq.m

Bedding: Double size  
Bed/Twin beds

Sleeps: Up to 2 guests

**VIEW MORE >**



An elegant guestroom with view of the historical building of the metro station. The Port Double Room with square view combines contemporary furnishing with sleek lines featuring a double bed or twin beds and bathroom with walk-in shower. Ensuring a comfortable stay with high speed Wifi, a flat-screen 43" TV, a writing desk, a Nespresso coffee machine and a tea station, guests will have all they need for a great stay in the very heart of the port.



**THE PORT DOUBLE ROOM  
WITH BALCONY  
AND SIDE SEA VIEW**

---

Size: 21 sq.m

Bedding: Double size Bed

Sleeps: Up to 2 guests

**VIEW MORE >**

The charming balcony offers a double view partially to the sea and to the train station. Featuring a double bed and a bathroom with walk-in shower, it is ideal for couples who seek to doubly enjoy the comforts of their room here in the middle of port just before sailing to the islands. The accented elegant decor is complemented with modern amenities, high speed Wifi, a flat-screen 43" TV, a writing desk, a Nespresso coffee machine and a tea station.

**THE PORT COMFORT ROOM**

---

Size: 25 sq.m

Bedding: Double size  
Bed/Twin beds + rollaway bed

Sleeps: Up to 3 guests

**VIEW MORE >**



Featuring a double bed and a bathroom with walk-in shower, a spacious guestroom with city view is ideal to accommodate to a group of three who seek to enjoy the comforts of their room here in the middle of port just before sailing to the islands. Ensuring a comfortable stay with high speed Wifi, a flat-screen 43" TV, a writing desk, a Nespresso coffee machine and a tea station, the hardest part will be deciding where to go and what to eat.



**THE PORT FRIENDS  
& FAMILY ROOM  
WITH CITY VIEW**

---

Size: 40 sq.m

Bedding: Twin beds

Sleeps: Up to 4 guests

**VIEW MORE >**

An excellent trip or city break awaits when you book this approximately 40-square-meter room with interconnected bedrooms ideal for families or group of friends, four beds and two bathrooms with walk-in showers. The accented elegant decor is complemented with modern amenities, high speed Wifi, two flat-screens 43" TV, two writing desks, two Nespresso coffee machines and tea stations.

**THE PORT  
SQUARE SUITE**

---

Size: 40 sq.m

Bedding: Double size Bed

Sleeps: 3 guests

**VIEW MORE >**



The brightest and most spacious room of the hotel reflects its concept with discreet luxury and high-technology services. Highlight of the suite is the privileged 20 sq.m. terrace with unrestricted views of the sea and the historical building of the train station. It constitutes of a double bed, a spacious living room and a bathroom with walk-in shower, along with an abundance of light coming inside from the three windows. The accented elegant decor is complemented with modern amenities, high speed Wifi, a flat-screen 49" TV, a writing desk, a Nespresso coffee machine and a tea station.

## ALL ROOMS & SUITES FEATURES

---

Fully equipped Mini Bar

Nespresso coffee machine  
(2 capsules complimentary per stay)

Tea & Coffee making facilities

Direct dial phone

Working desk

Modern furnishing

Egyptian Linen

Safe deposit box

Spacious bathroom

Walk-in shower

Branded toiletries

Hair dryer

A/C, individually controlled

Flat Screen Smart TV  
43" / 49" in suites

Complimentary high speed Wi-Fi

Premium quality bedding

Double size beds (twins available)

Accessible rooms

(Double with Square View)

Express Check out



## GENERAL FACILITIES

A la Carte Restaurant

Breakfast Room

All day bar

24-hour Reception

Concierge Service

Room Service

Business Center

Internet Corner

Wi-Fi in public areas

Transfer Service

Laundry Service

Baby Sitting (upon request)

Doctor on call

Parking reservations assistance  
(not on property)

Meeting Room



## **FOOD & BEVERAGE**

In Bacaro all-day restaurant the visitors can enjoy gastronomic/ culinary delights inspired by the ethnic cuisine combined with a relaxed and sensory atmosphere. Bacaro provides a variety of options for the guests and visitors to meet throughout the day for a coffee or bites, a cocktail, a meal, or a dessert made daily in-house.

Thanks to its warm and relaxing atmosphere, it also consists of an ideal space for a business lunch, friends gathering, or after-office drinks.





## **BUSINESS MEETINGS**

At the forefront of the port, the new city hotel attracts business travelers from all over the world. The Meeting Room on the semi floor fully equipped area for professional meetings can cover up to 8 persons. To ensure guests will get the best business meeting, the professional team of the hotel will be at disposal to arrange all required details.

## **ADDITIONAL SERVICES:**

Catering service

Audio-visual renting





## LOCATION

**20m** from the new metro station & the train station

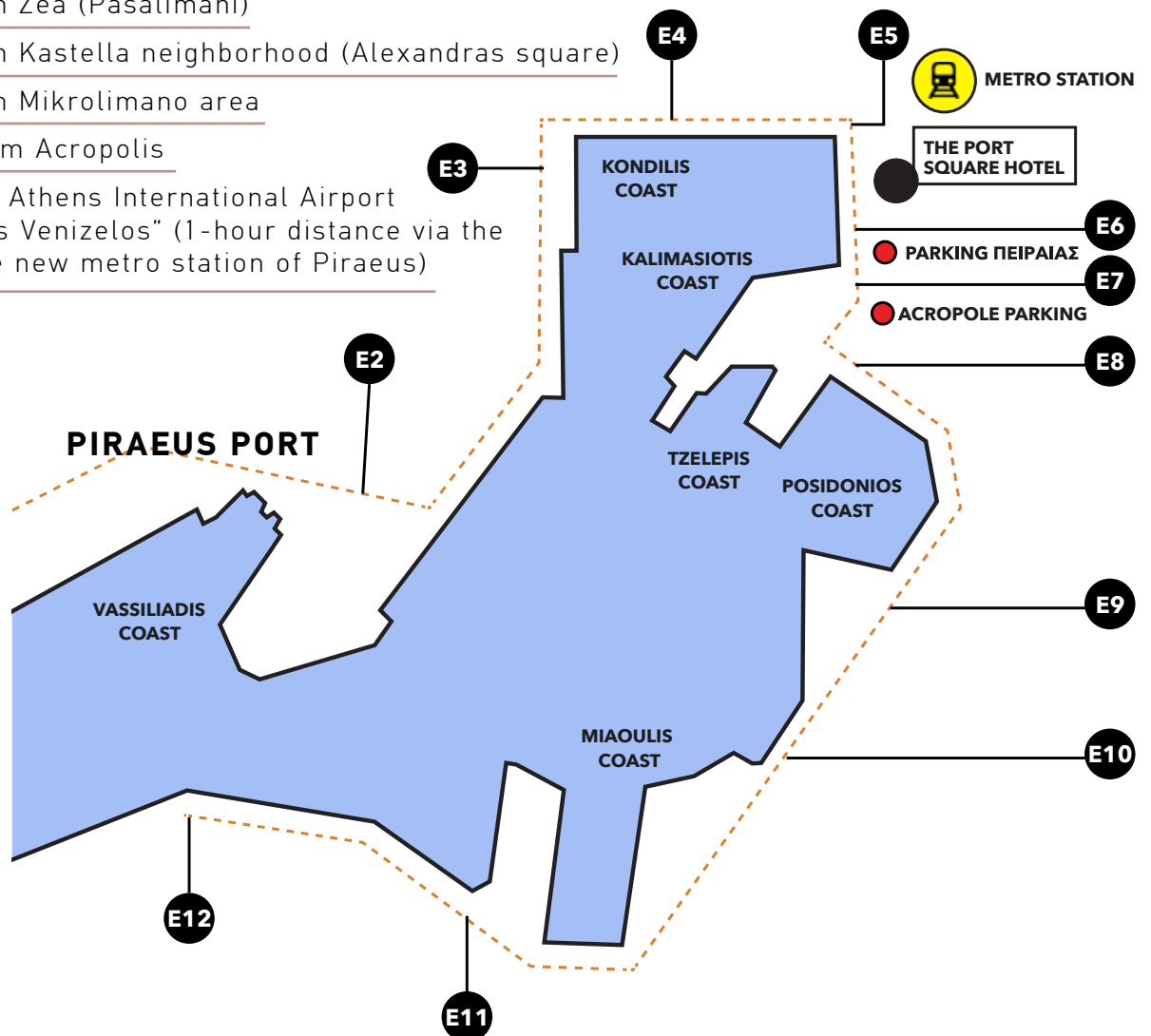
**1.2km** from Zea (Pasalimani)

**1.5km** from Kastella neighborhood (Alexandras square)

**1.8km** from Mikrolimano area

**10.1km** from Acropolis

**48km** from Athens International Airport "Eleftherios Venizelos" (1-hour distance via the train & the new metro station of Piraeus)





**THE PORT**  
[ S ■ L U ]  
A R E  
HOTELS

The Port Square Hotel | [www.theportsquarehotel.gr](http://www.theportsquarehotel.gr)  
6 G. Kasimati Str., Piraeus, 185 31, Greece,  
T: +30 210 4100003, E: [info@theportsquarehotel.gr](mailto:info@theportsquarehotel.gr)

 **TRESOR**  
HOSPITALITY  
MANAGEMENT & CONSULTING