

# naūs

BOUTIQUE HOTEL NAFPLIO



## INTRO DUCTION

---

Naus Boutique Hotel offers an elegant and distinctive stay in the historic heart of Nafplio. With 38 meticulously designed rooms and suites, the hotel caters to the needs of even the most discerning guests. Its sophisticated minimalist aesthetic and private balconies allow guests to wake up to breathtaking coastal panoramas featuring Bourtzi Castle or charming city views, creating a serene and refined retreat.

As a smart hotel, Naus Boutique Hotel enhances guest comfort with advanced technology, including smart lighting and curtains for comfort and energy efficiency, smart climate control with automatic air conditioning adjustment via sensors, and adaptive lighting scenarios for the perfect ambiance.

Whether traveling for business or leisure, guests will experience an atmosphere of comfort, style, and unparalleled hospitality, enriched by modern innovations.



## LOCATION

Located in the heart of Nafplio's historic old town, Naus Boutique Hotel is perfectly situated for exploring the region's many fascinating sights. Guests are just steps away from a wealth of attractions that showcase Nafplio's rich history, vibrant culture, and breathtaking natural beauty.

## SIGHTS

- Palamidi Fortress
- Bourtzi Castle
- Acronafplia
- Syntagma Square
- Archaeological Museum
- War Museum of Nafplio
- Church of Agios Spyridonas
- Land Gate
- Lion of Bavaria

## DISTANCES

- Nafplio Port: 3-minute walk away
- Kalamata International Airport (KLX): 30 km
- Athens International Airport (ATH): 140 km



## COZY SINGLE ROOM

---

Capacity: Up to 1 guest

---

Size: 16 sq.m

---

View: City view



The Cozy Single Room is an excellent choice for both leisure and business travelers. Designed for efficiency, it features a single bed, a bathroom with a shower, coffee-making facilities, a Smart TV for entertainment, a mini-bar for refreshments, and a safe box for added security. Thoughtfully equipped with essential amenities, this room serves as a convenient base for exploring Greece's first capital.



## COZY DOUBLE ROOM

---

Capacity: Up to 2 guests

---

Size: 16 sq.m

---

View: City view or partial sea view

The Cozy Double Room provides a harmonious blend of modern design and warm hospitality, ideal for two guests. It features a comfortable double bed, a bathroom with a shower, a writing desk, a Smart TV, and a mini-bar. A private balcony offers picturesque city or partial sea views, creating an inviting space in Greece's charming surroundings.

## CLASSIC DOUBLE ROOM

---

Capacity: Up to 2 guests

---

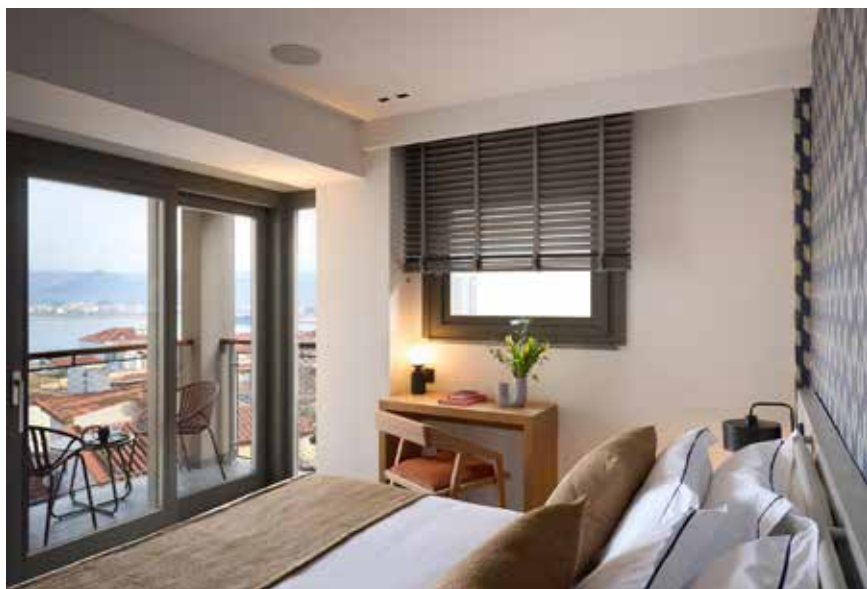
Size: 19 sqm

---

View: Partial sea view



The Classic Double Room features a comfortable double bed and a spacious bathroom with a refreshing shower. For added convenience, it is equipped with a work desk and a Smart TV for entertainment. A coffee maker is provided, allowing guests to enjoy a fresh cup of coffee in the morning. The private, furnished balcony offers an inviting space to relax with a drink while taking in the tranquil surroundings.



## CLASSIC DOUBLE ROOM SEA VIEW

---

Capacity: Up to 2 guests

---

Size: 20 sqm

---

View: Sea view or partial sea view

The Classic Double Room with Sea View is designed for the modern traveler, offering a seamless blend of contemporary comfort and refined elegance. It features a cozy double bed, a spacious bathroom with a shower, a work desk, a Smart TV, a mini-bar, and coffee-making facilities. The private balcony provides a peaceful retreat, with charming sea views, creating the perfect space for guests to relax and unwind.

## PREMIUM DOUBLE ROOM

---

Capacity: Up to 2 guests

---

Size: 22 sqm

---

View: Partial sea view & city view



The Premium Double Room at Naus Boutique Hotel offers a sophisticated retreat with refined details and enhanced amenities. Featuring minimalist décor, elegant touches, and abundant natural light, this room creates a captivating ambiance from the moment of arrival. It includes a comfortable double bed for restful sleep after a day of city exploration. Additional features include a spacious bathroom with a shower, a desk, a Smart TV, a mini-bar, and coffee-making facilities. Guests can unwind on the private, furnished balcony, which provides tranquil partial sea or city views.



## JUNIOR SUITE

---

Capacity: Up to 2 guests

---

Size: 26 sqm

---

View: Patio view

Upon entering Junior Suite, guests are embraced by a blend of earthy tones, modern design, and harmonious décor, creating a warm and inviting atmosphere. The suite features a plush double bed with a pillow selection for personalized comfort. The spacious bathroom includes both a shower and a bathtub, while the main area offers a desk, a Smart TV, a safe, a mini-bar, and coffee-making facilities. A baby cot is available upon request for families with children. The fully furnished private courtyard provides a serene retreat, perfect for relaxation.



## NAUS SUITE, PANORAMIC SEA VIEW

---

**Capacity: Up to 2 guests**

---

**Size: 30 sqm**

---

**View: Panoramic sea view**



Experience an unforgettable stay in the Naus Suite, Panoramic Sea View. Ideal for two guests, it features a plush double bed with a pillow selection for ultimate comfort. Families with children can request a baby cot. The spacious bathroom includes a shower, bathtub, hairdryer, and essential amenities. Additional comforts include a desk, Smart TV, safe, mini-bar, and coffee-making facilities. The private balcony, furnished for relaxation, offers breathtaking panoramic sea views, perfect for unwinding in a serene setting.

## ALL ROOMS AND SUITES FEATURE

---

- Pillow Menu
- Wake-Up Service
- Phone
- 43' Smart TV / Smart Hub Streaming
- Mini Bar
- Safe Box
- Air Conditioning
- Free Wi-Fi
- Bathroom with Shower
- Bath Amenities
- Smart Lighting & Curtains
- Sensor-Based Climate Control
- Adaptive Lighting Modes (Bright/Dark)
- Hairdryer
- Espresso Machine

## GENERAL FACILITIES

---

- Snack Deck
- Breakfast
- 24h reception
- Room service
- Business center
- Luggage storage
- Laundry service



## FOOD & BEVERAGE

---

### Nautilus | Snack Deck

For a midday break or a relaxed gathering with friends, Nautilus is the perfect spot. Located on the ground floor, this stylish and contemporary space seamlessly complements the hotel's design. Guests can enjoy a coffee or choose from a menu featuring a range of comfort foods ideal for a quick meal. The beverage selection includes coffee, soft drinks, and various other refreshments. Nautilus are open daily from 11:00 AM to 10:00 PM.

### Breakfast

At Naus Boutique Hotel, breakfast is served daily from 8:00 AM to 10:30 AM. Guests can enjoy a thoughtfully curated selection of Greek and local specialties, designed to energize and delight both leisure and business travelers.